

3 Bedrooms | 3 Bathrooms | 1,921 Square Feet | Peterborough, ON

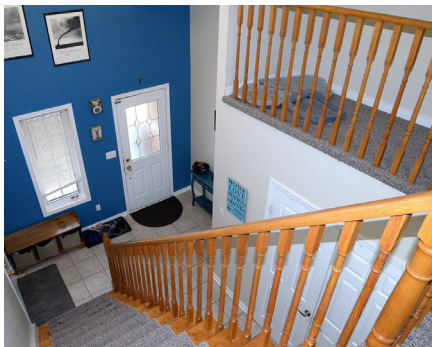
Jeff & Katie

1438 Tamblin Way

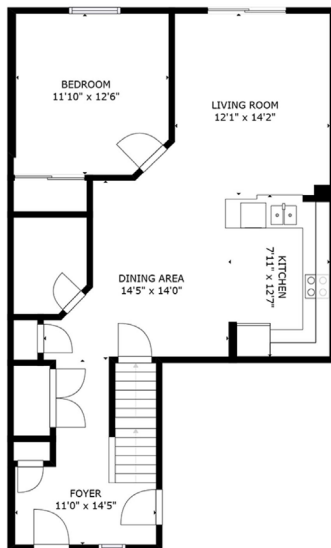


Beautiful
Condo in
West End!

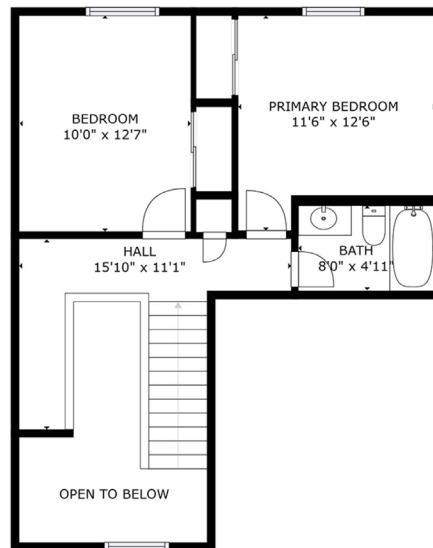
What a great opportunity to live in the desirable west end of Peterborough. 1438 Tamblin Way is a very spacious 3 bedroom 3 bath townhouse. The main floor consists of a large kitchen with pantry, dining room, a full bath, a bedroom and main floor laundry. The second level has 2 generously sized bedrooms and another full bath. Fully finished lower level, single car garage and a fully fenced yard.



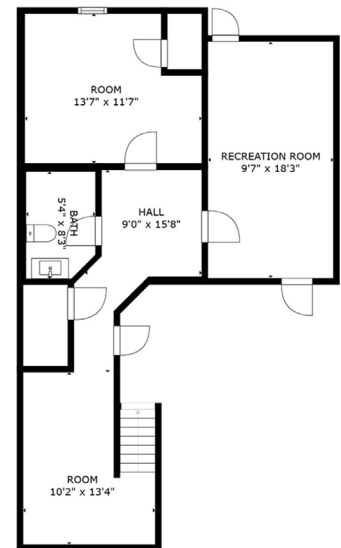
The Floor Plans



FIRST FLOOR



SECOND FLOOR



BASEMENT



Jeff Sands
Broker

Katie Hadden
Salesperson

C: 705-243-9797
O: 705-775-2255 x504
haddenandsands@gmail.com
JeffandKatie.ca



BALL Real Estate Inc., Brokerage
191 Hunter St. W
Peterborough K9H 2L1
ballrealestate.ca

Not intended to solicit buyers or sellers currently under contract with a brokerage.