

Jeff & Katie





477 GIFFORD DRIVE

Ennismore, Ontario

THE *Property Overview*

J&K

 2	 1
TYPE	<i>2 Storey</i>
SQ. FT.	<i>917.97</i>

Welcome to 477 Gifford Drive, a rare opportunity to own waterfront property on Chemong Lake in a highly desirable location. Set on a generous lot with a clean, accessible shoreline, this property offers endless potential for those looking to create their ideal lakeside retreat. The existing home features two bedrooms, one bathroom, and a spacious living area, providing a functional starting point for renovation or reimagining. The true value lies in the land and its exceptional waterfront setting, offering flexibility to expand, rebuild, or design a custom home tailored to your lifestyle. Stunning lake views, direct water access, and peaceful surroundings await!





Living Area



Dining Area





Kitchen



Bedrooms

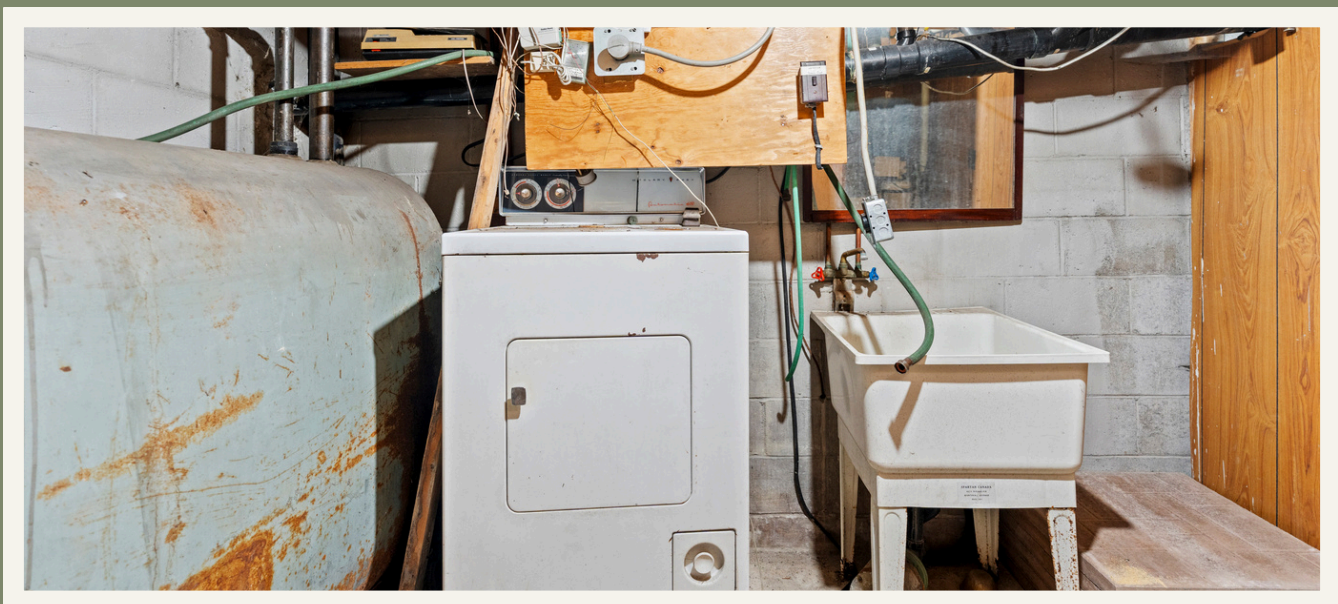






Bathroom







FLOOR PLAN



TOTAL AREA
917.97



SCAN TO VIEW THE
VIRTUAL TOUR





— Jeff —
&
— Katie —

VIEW THIS LISTING AT
JEFFANDKATIE.CA

Jeff Sands
BROKER

Katie Hadden
REALTOR



705-243-9797



team@jeffandkatie.ca



191 Hunter St W Peterborough, ON