

Jeff & Katie



J&K

735 MOUNTAIN ASH RD

Peterborough, Ontario

THE *Property Overview*



 3	 2
TYPE	<i>Raised Bungalow</i>
SQ. FT.	<i>902.47</i>

Welcome to 735 Mountain Ash Road, a well-maintained raised bungalow in Peterborough's convenient south end, ideal for first-time buyers, investors, or multigenerational living. The main floor offers a bright, flowing kitchen, dining, and living area, two generous bedrooms, a large bathroom, and main-floor laundry. The lower level adds strong in-law suite potential with a kitchenette, living area, bedroom, bathroom, and separate laundry, plus a private entrance through the attached garage. Updated in 2022 with a new roof, kitchens, flooring, bathrooms, and paint, with new air conditioning added in 2026. A fully fenced yard and unbeatable location near Lansdowne Place and Highway 115.



Living Area



Dining Area

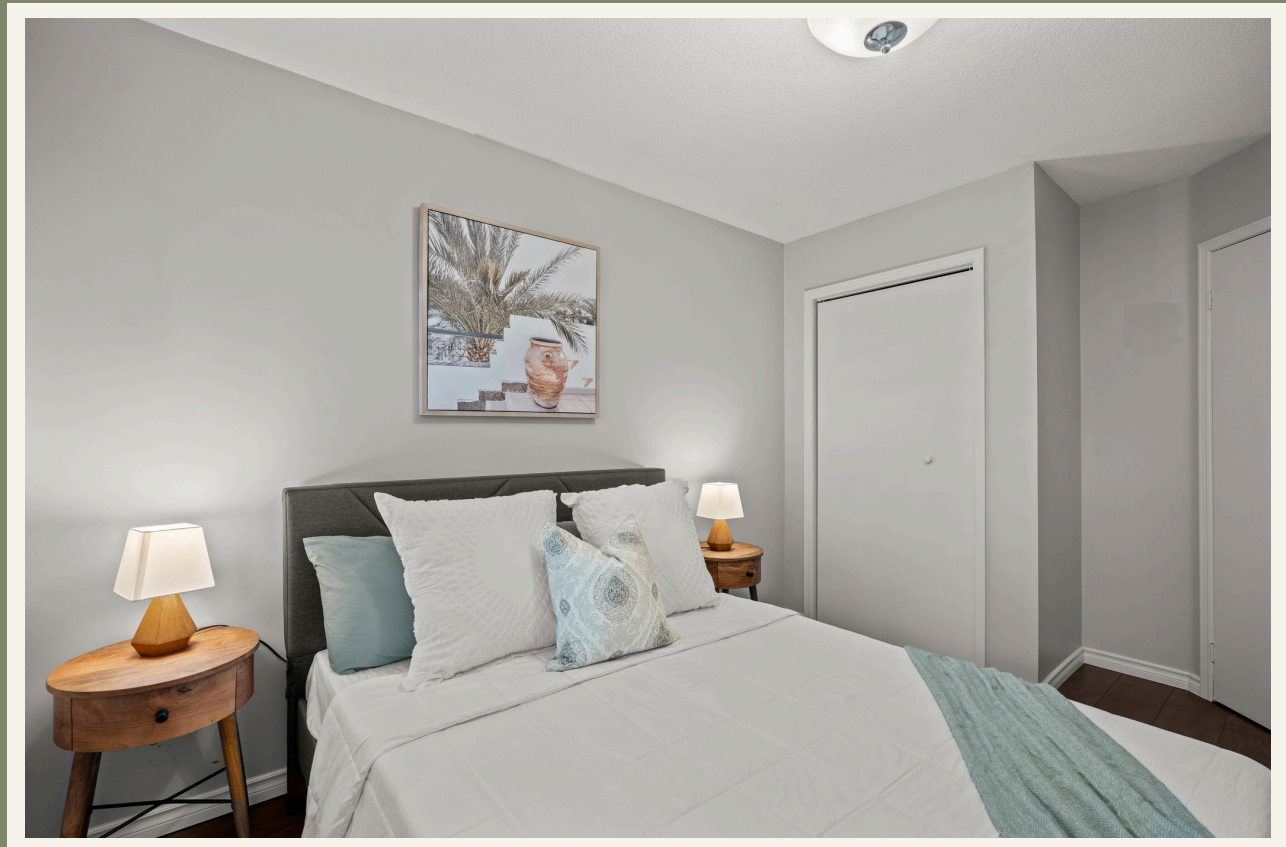


Kitchen



Bedrooms









Bathrooms



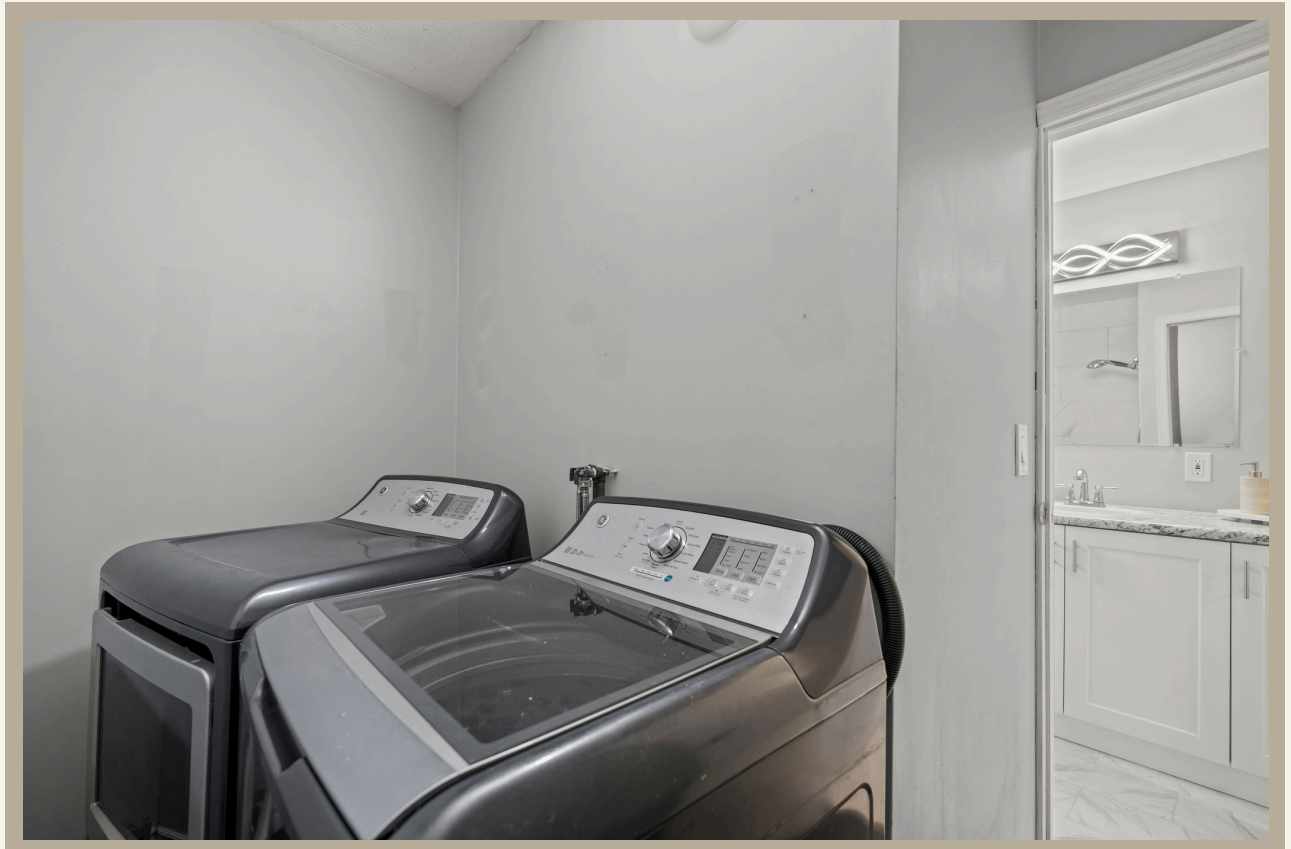


Lower Kitchenette



Lower Living Space

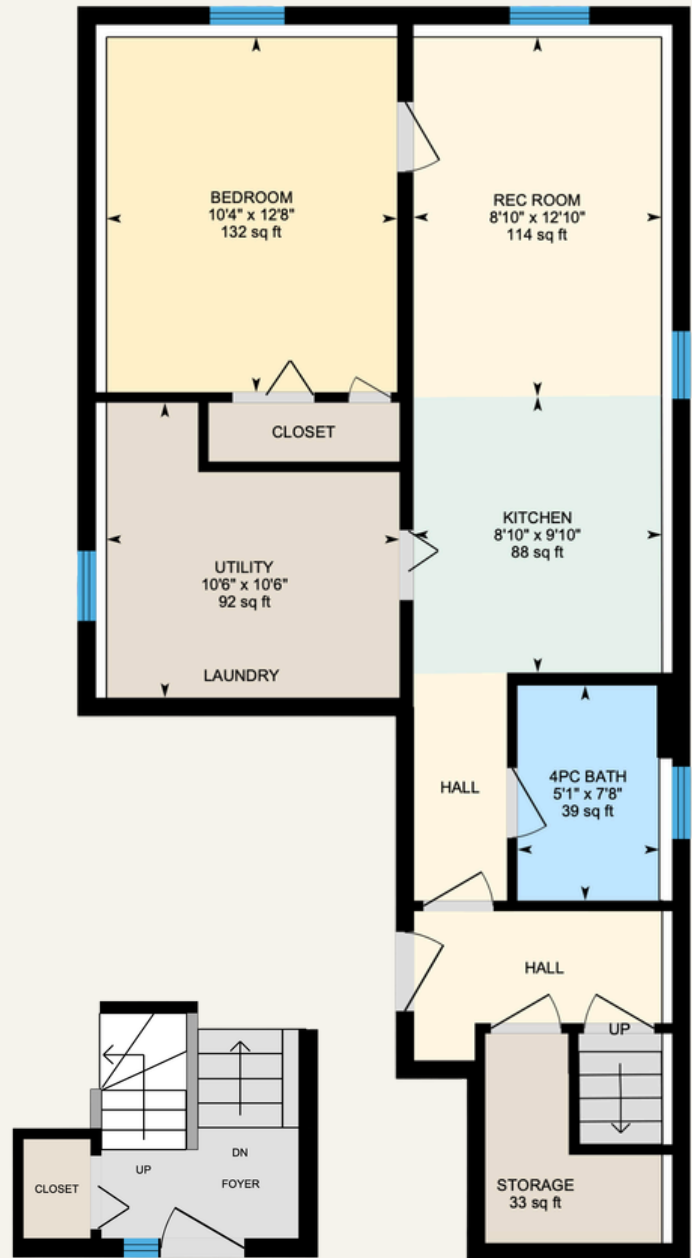








FLOOR PLAN



TOTAL AREA
902.47

SCAN TO VIEW THE
VIRTUAL TOUR






— Jeff —
— & —
— Katie —

VIEW THIS LISTING AT
JEFFANDKATIE.CA

Jeff Sands
BROKER

Katie Hadden
REALTOR

 705-243-9797

 team@jeffandkatie.ca

 191 Hunter St W Peterborough, ON